

PRODUCT DATASHEET

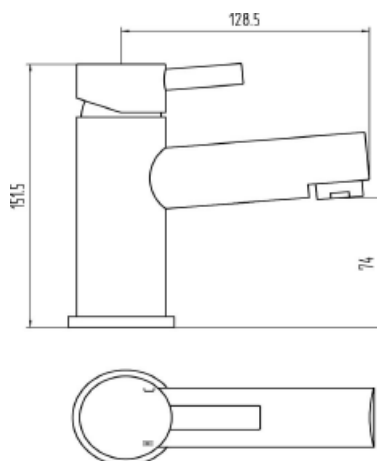
K30159 – MONO BASIN MIXER WITH WASTE**Description**

The modern style creates a stunning designer look to your bathroom.

Product Information

Barcode	5300614873836
Product Code	FB05 / K30159
Construction	Brass Body CuZn40Pb2, EN CW617N (equivalent to BS CZ122)
Finishes	Chrome plated to BS EN 248
Product Type	Contemporary
Water Pressure	Min. 0.2 bar, Max. 6.0 bar
Plumbing Systems	Suitable for all plumbing systems
Standards	Complies with BS5412, BS EN200
Certification	Manufactured to comply with WRAS
Cartridge	40mm ceramic disc cartridge
Net Weight (Tap only)	980g
Fitting	UK: M12 x 400mm ½" BSP Female Flexi Tails.
Packaging	49.5x41.5x33cm/Carton (10pcs/carton)
Guarantee	10 years against manufacturing faults (excluding serviceable parts).
Additional Information	Supplied with G 1¼" sprung waste (UK only); Air Aerator

Dimensions

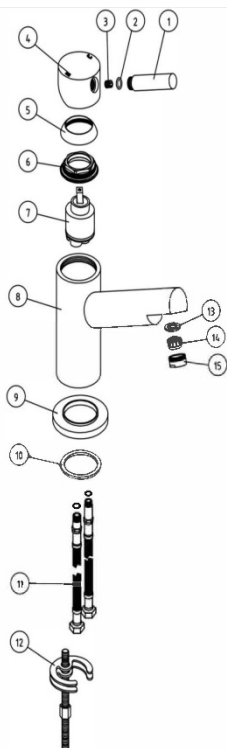


Flow Rates – Litres per minute

System Pressure	0.1 Bar	0.2 Bar	0.3 Bar	0.5 Bar	1.0 Bar	1.5 Bar	2.0 Bar	3.0 Bar	4.0 Bar	5.0 Bar
K30159	3.2	3.7	-	5.8	8.0	9.0	11.80	14.5	-	-

The information contained on this page was correct at date of issue. Fitting dimensions are provided as a guide only. Some variation may occur due to manufacturing tolerances. We pursue a policy of continuing improvement in design and performance of our products and so reserve the right to change specifications without prior notice.

Components



NO	NAME	QTY
1	Handle Bar	1
2	"O" ring	1
3	Grub Screw	1
4	Handle	1
5	Shroud	1
6	Cartridge Nut	1
7	Ø40 Cartridge	1
8	Tap Body	1
9	Ø40 Cartridge	1
10	"O" ring	1
11	M12 HOSES	2
12	MS Fixig Kit	1
13	"O" ring	1
14	Aerator	1
15	M24 x 1 Nozzel	1